

PIN

INNOVATIVE SOLUTIONS DEVELOPED
BY RUDOLF VON SCHEVEN GMBH
ARMATURENFABRIK UND APPARATEBAU



PRODUCT INFORMATION 02 / 2015

BLOCK BALL VALVE SBAC - C



TPED-APPROVAL FOR
HIGH-PRESSURE ACETYLENE



Gas cutting of 50 mm sheet

Acetylene. The most efficient of the traditional fuel gases. More than half of all companies worldwide use gases in some form or another for work processes or industrial-scale syntheses. These gases include acetylene, which is ideal for autogenic processes such as welding, torch cutting or flame hardening; this type of gas offers the advantage of allowing maximum regulation of thermal efficiency together with space-saving handling. For transportation, ethyne is dissolved in acetone and decanted into compressed gas cylinders with calcium silicate hydrate. This is an important safety measure, because acetylene, like all alkynes, is highly flammable when combined with oxygen. The requirements to be met by the technical equipment, including our ball valves, are equally strict.



Block ball valve for high-pressure acetylene SBAC-C, steel, TPED

With female and male thread

DN 06 / DN 10 mm PN 25 bar

Series 03 – male thread on both sides for non-soldering compression fittings with cutting ring DIN 2353 – heavy-duty series
06 – female thread on both sides DIN ISO 228-1

Temperature range Permissible operating temperatures: -20°C to +65°C

Range of use Ball valve type SBAC-C in the nominal widths of DN 6 and DN 10 is approved for high-pressure acetylene PN 25 as a bundle / in-line valve according to the following standards and directives marked with π , followed by the identification number of the notifying authority: Directive 2010/35/EU about transportable pressure equipment (TPED) Type examination ADR 2013 conformity according to DIN EN ISO 10297:2006

Approvals Directive 2010/35/EU about transportable pressure equipment (TPED) Type examination ADR 2013 conformity according to DIN EN ISO 10297:2006

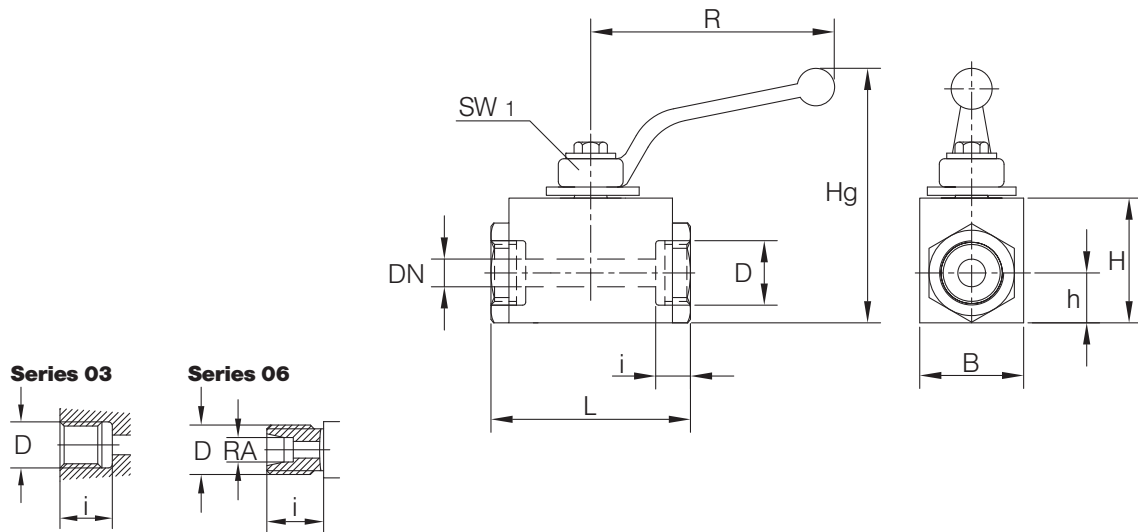
Technical specification Ball valve type SBAC-C is intended for throughflow and/or shutoff by means of 90° operation of the actuating element for the medium of acetylene with the pressure rating PN 25. The design consists of a block body with connector screwed in on both sides. The stem is fitted blowout-proof from the outside.

Option



Safety shutoff handle, engaging and lockable as an alternative to the hand lever.

Technical data SBAC-C



Series 03 (male thread on both sides for non-soldering compression fittings with cutting ring DIN 2353 – heavy-duty series)

Type	DN mm	PN bar	D/RA	i mm	L mm	B mm	H mm	h mm	Hg mm	R mm	SW1 mm	Weight kg
SBAC-C 1303	10	25	M 24x1.5/RA16-S	14	102	35	45	18	85	130	10	1.0
SBAC-C 1303-LH	10	25	M 24x1.5/RA 16-S	14	103	35	45	18	-	-	-	0.9
			M 28x1.5 LH/RA 16-S	18	103	35	45	18	-	-	-	0.9

Series 06 (female thread on both sides DIN ISO 228 - 1)

Type	DN mm	PN bar	D	i mm	L mm	B mm	H mm	h mm	Hg mm	R mm	SW1 mm	Weight kg
SBAC-C 1006	6	25	G3/8"	12.5	80	30	40	15	92	112	10	0.5
SBAC-C 1306	10	25	G1/2"	14.5	100	35	45	18	85	130	10	1.0

Please ask separately for requirements that exceed the standard conditions of use listed in this data sheet.

As a matter of principle, the safety information provided in the operating and servicing manual must be observed. The operating and servicing manuals as well as the approval certificates can be downloaded at www.von-scheven.de.

We reserve the right to carry out technical modifications.

P R O D U C T L I N E

2-WAY BALL VALVES WITH THREAD CONNECTION

DN 4-80 mm, PN up to 2.500 bar

2-WAY BALL VALVES WITH FLANGE CONNECTION ACCORDING TO DIN, ANSI, SAE

DN 10-250 mm, PN up to 420 bar

2-WAY BALL VALVES WITH WELD ENDS

DN 8-50 mm, fully welded up to 300 mm, PN up to 400 bar

BALL VALVES FOR MANIFOLD INSTALLATION

DN 6-25 mm, PN up to 500 bar

3-WAY CHANGEOVER BALL VALVES

DN 4-100 mm, PN up to 500 bar

MULTIWAY BALL VALVES

DN 4-25 mm, PN up to 500 bar

BALL VALVES WITH PLUG-IN CONNECTORS (STECK-O, SUPER-STECK-O, SSKV)

DN 6-100 mm, PN up to 500 bar

MINING PORTFOLIO

DN 10-100 mm, PN up to 500 bar

CUSTOMISED SOLUTIONS



Rudolf von Scheven GmbH
Wuppertaler Strasse 10-12
D-45549 Sprockhövel
Phone +49 (0)23 24/97 42-0
www.von-scheven.de

