



# Ball valve NB-AF-D, HB-AF-D, NSK-AF-D, HSK-AF-D, stainless steel With fixed weld ends

DN 8 – 50 mm PN max. 40 bar/PN max. 400 bar

**Series** 40 – with fixed weld ends

**Temperature range** Standard: -10°C to +150°C  
On request: -50°C to +250°C

**Range of use** Liquids: Liquids group 1 and 2 according to PED 2014/68/EU Article 13  
Gases: Liquids group 1 and 2 according to PED 2014/68/EU Article 13  
As a matter of principle, the resistance to the flow medium must be ensured.

**Technical specification** Ball valves NB-AF-D, HB-AF-D, NSK-AF-D and HSK-AF-D are equipped as ball valves with a fixed weld end on both sides. The stem seal is maintenance-free.

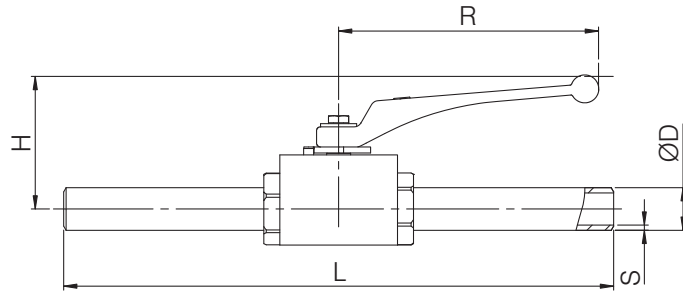
Please ask separately, where requirements exceed the standard conditions of use listed in this data sheet.  
As a matter of principle, the operating and maintenance instructions, in particular the safety instructions must be observed!  
Operating and maintenance instructions as well as the approval certificates can be downloaded at [www.von-scheven.de](http://www.von-scheven.de).

We reserve the right to carry out technical modifications.

**Technical data**

**DN 8 to DN 25**

PN max. 40 bar NB-AF-D  
 PN max. 400 bar HB-AF-D

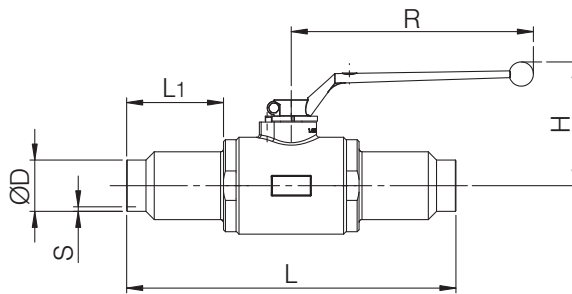


DN mm	NB-AF-D PN bar	HB-AF-D PN bar	L mm	D* mm	S* mm	H mm	R mm	Weight kg
8	40	400	262	13.05	2.3	77	112	0.7
10	40	400	262	17.20	2.3	77	112	0.8
15	40	400	279	21.30	2.6	67	130	1.1
20	40	400	284	26.90	3.2	71	130	1.6
25	40	400	298	33.70	3.2	82	160	2.3

\*Other pipe dimensions are possible on request.

**DN 32 to DN 50**

PN max. 40 bar NSK-AF-D  
 PN max. 400 bar HSK-AF-D



DN mm	NSK-AF-D PN bar	HSK-AF-D PN bar	L mm	D* mm	S* mm	H mm	R mm	Weight kg
32	40	400	309	42.4	3.2	117	250	4.5
40	40	400	276	48.3	3.2	121	250	4.2
50	40	400	294	60.3	3.6	128	250	8.5

\*Other pipe dimensions are possible on request.

**Example of order:** Type HB-AF-D ball valve of stainless steel, DN 25 with fixed weld ends  
**HB-AF-D 25 40**

**Parts list**

Pos.	Designation	NB-AF-D NSK-AF-D Material*	HB-AF-D HSK-AF-D Material*
10	Body	Stainless steel	Stainless steel
20	Fitting	Stainless steel	Stainless steel
30	Ball	Stainless steel	Stainless steel
40	Seal	PTFE	POM
50	Stop washer	Stainless steel	Stainless steel
60	Stem	Stainless steel	Stainless steel
80	O-ring	FPM	NBR
90	Hand lever	Zinc die-casting	Zinc die-casting
100	O-ring	FPM	NBR
110	Bolt		
120	Washer		
130	Sliding ring	PTFE	PTFE
140	Stop pin		

\*Standard (can vary according to nominal width), other materials on request.  
 Due to the design, not all items are used for all nominal widths.

