



3- and 4-way high-pressure block ball valve HBDI-C, HBVI-C, HBDI-D, HBVI-D, steel With female thread

DN 4 - 25 mm PN max. 500 bar

Also available in stainless steel.

Series 06 – female thread on all sides DIN ISO 228-1

Temperature range Standard: -10°C to +90°C
On request: -50°C to +250°C

Range of use Liquids: Liquids group 1 and 2 according to PED 2014/68/EU Article 13
Gases: Liquids group 1 and 2 according to PED 2014/68/EU Article 13
As a matter of principle, the resistance to the flow medium must be ensured.

Technical specification HBDI-C, HBVI-C, HBDI-D and HBVI-D type ball valves consist of a block body with screwed in connectors. Actuators can be attached by means of an extension kit. This retrofit requirement must be specified when placing the order (additional charge).

Please ask separately, where requirements exceed the standard conditions of use listed in this data sheet.

As a matter of principle, the operating and maintenance instructions, in particular the safety instructions must be observed!
Operating and maintenance instructions as well as the approval certificates can be downloaded at www.von-scheven.de.

We reserve the right to carry out technical modifications.

Technical data

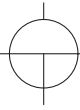
HBDI-C, HBVI-C, HBDI-D, HBVI-D

Ball holes

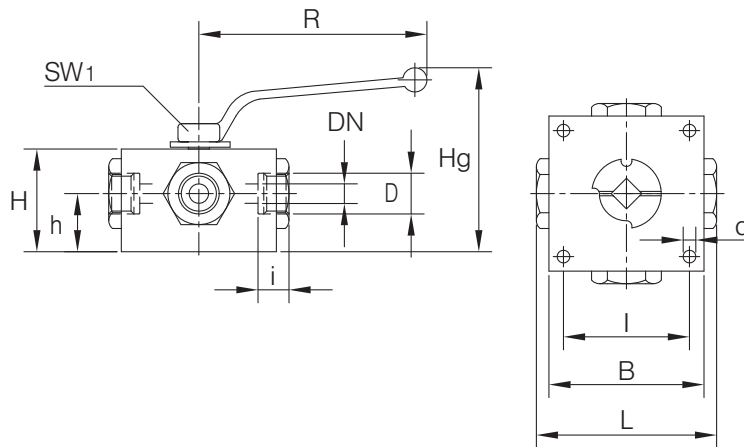
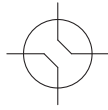
L-form



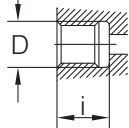
T-form



X-form



Series 06



Series 06 (pipe female thread DIN ISO 228-1)

DN mm	PN bar	D	i mm	L mm	l* mm	B mm	d mm	H mm	h mm	Hg mm	R mm	SW1 mm	Weight kg
4	500	G 1/8"	11.0	82	55	70	6.5	45	26.0	91	160	10	1.7
6	500	G 1/4"	12.5	82	55	70	6.5	45	26.0	91	160	10	1.7
10	400	G 3/8"	12.5	98	65	80	6.5	53	30.0	103	160	10	2.6
15	320	G 1/2"	14.5	119	80	100	9.0	60	35.0	122	250	17	4.4
20	250	G 3/4"	18.0	130	85	107	9.0	72	42.5	126	370	22	5.8
25	160	G 1"	20.0	150	105	126	11.0	85	47.5	139	370	22	9.5

*n stainless steel: Deviating dimensions

Example of order: HBDI-C type three-way ball valve made of steel, DN 15 with female thread DIN ISO 228-1 with ball holes in T-form

HBDI-C 15 06-T

Parts list

Pos.	Designation	HBDI-C HBVI-C Material*	HBDI-D HBVI-D Material*
10	Body	Steel	Stainless steel
20	Fitting	Steel	Stainless steel
30	Ball	Steel	Stainless steel
40	Sealing piston	POM/brass	POM/brass
60	O-ring	NBR	NBR
70	O-ring	NBR	NBR
80	Fitting	Steel	Stainless steel
90	O-ring	NBR	NBR
100	Hand lever	Zinc die-casting	Zinc die-casting
110	O-ring	NBR	NBR
120	Stop washer		
140	Stop pin		
160	Supporting ring	PTFE	PTFE
200	Blanking plug	Steel	Stainless steel

*Standard (can vary according to nominal width), other materials on request.
Due to the design, not all items are used for all nominal widths.

