



Hose breakage safety valve V-SB, steel

DN 25 - 80 mm PN bis 16 bar

Temperature range Permissible operating temperature: -10°C to +90°C

Technical specification The flow cross-section between the clear valve housing and the valve taper is greater than the flow cross-section of the valve face. The force of the compression spring is only slightly higher than the pressure difference that is required to overcome the flow resistance of the flowing medium through the free cross-section between the clear valve housing and the valve taper. The valve is thus kept open by this pressure difference. Where a considerable drop in pressure occurs between the valve and the consuming device, due to breakage or rupture of the compressed air pipes, the valve taper is then pressed against the valve seat which interrupts the through flow. Due to the small bore in the valve taper, a small quantity of compressed air can flow through which on the one hand is no longer able to cause any knocking of the hose, on the other hand, after the hose has been repaired, the space between the valve and the consuming device is refilled until pressure compensation is achieved so that the valve taper is raised by the compression spring from the valve seat, thus releasing the full through flow again.

These valves have been tested for use by the DMT Institute.

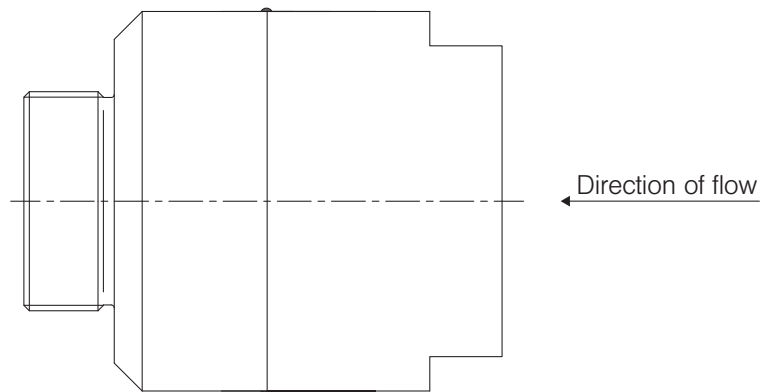
Please ask separately, where requirements exceed the standard conditions of use listed in this data sheet.

As a matter of principle, the operating and maintenance instructions, in particular the safety instructions must be observed!

Operating and maintenance instructions as well as the approval certificates can be downloaded at www.von-scheven.de.

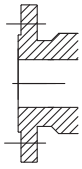
We reserve the right to carry out technical modifications.

Technical data V-SB

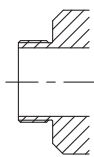


Connection types

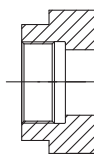
Flange



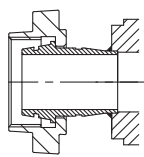
Male thread



Female thread



Bushing with taper and cap nut



Parts list

Pos.	Designation	Material*
1	Body	Steel
2	Upper part	Steel
3	Valve taper	Brass
4	Spring	Stainless steel
5	Spacer pin	Brass
6	O-ring	NBR

*Standard (can vary according to nominal width), other materials on request.
Due to the design, not all items are used for all nominal widths.

